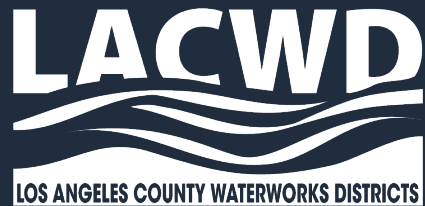




Waterworks District 29
Topanga Town Council
April 12, 2023



PRESENTATION OVERVIEW

- Drought update
- Water usage
- Infrastructure update
- Customer resources
- Questions & Answers

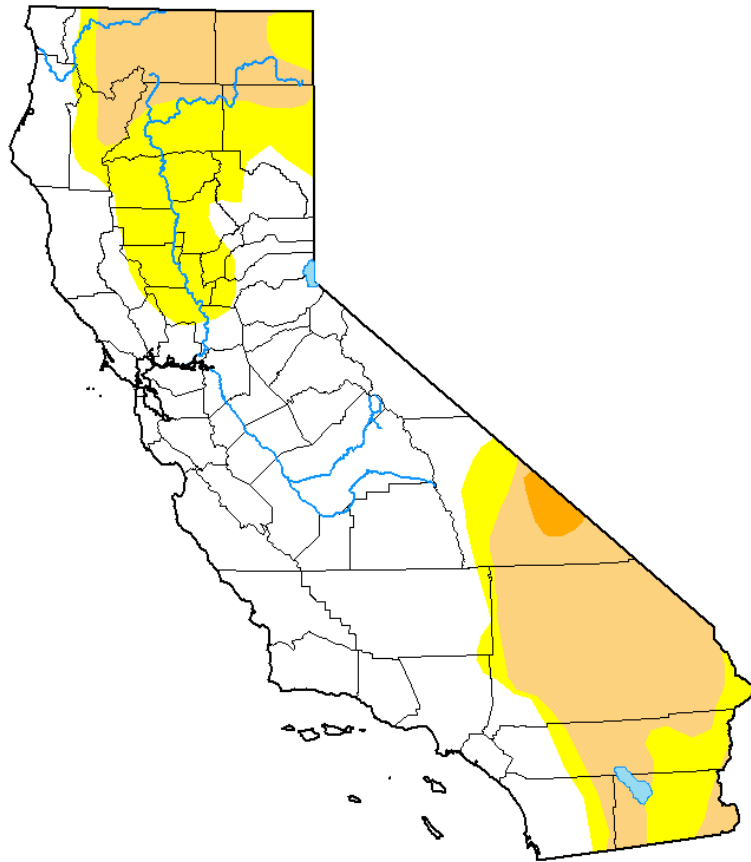


DROUGHT UPDATE

- Recent storms have been great for water supplies in California
- Historic dry conditions
- Southwest US in multi-decade drought
- Southern California's water challenges are far from over



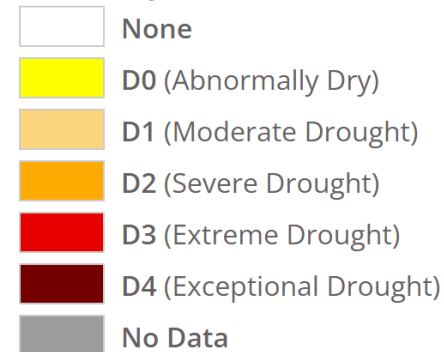
DROUGHT MONITOR



**Map released: Thurs. April 6,
2023**

Data valid: April 4, 2023 at 8 a.m. EDT

Intensity



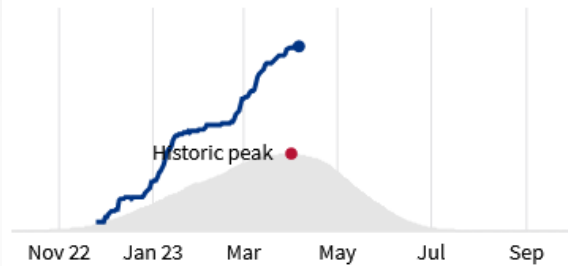
Source: <https://droughtmonitor.unl.edu>

CALIFORNIA WATER WATCH

Statewide snowpack levels

Snow melt feeds our reservoirs & rivers

239% of average peak snowpack

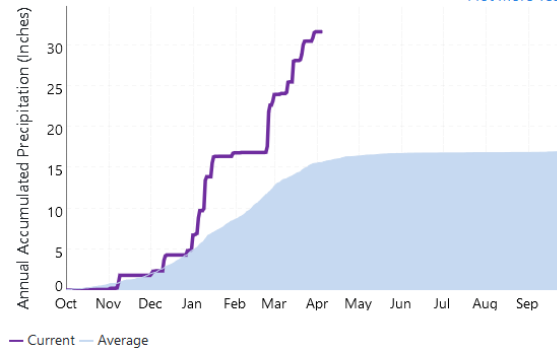


Annual Precipitation Accumulation (period of record: 1981-current)

Santa Monica Bay Watershed as of 04/05/2023

[Download Image](#)

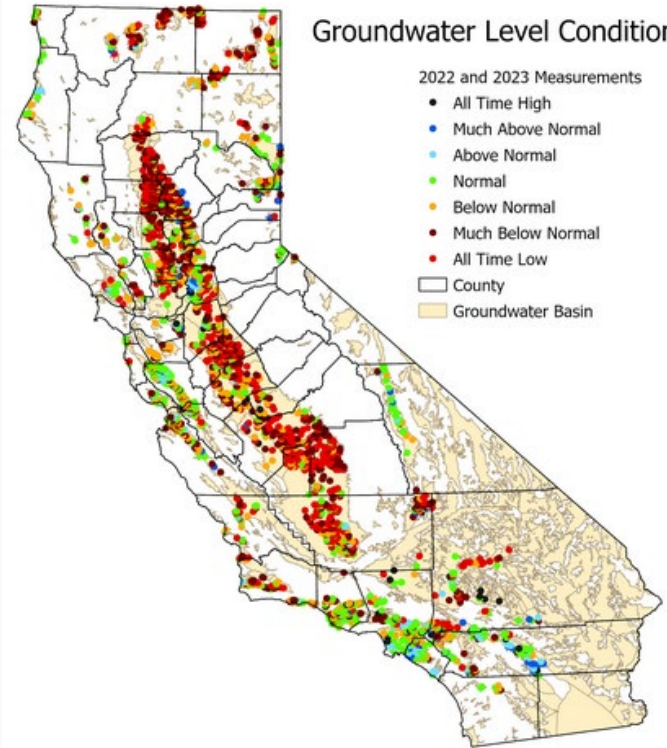
[Plot More Years](#)



Groundwater Level Conditions

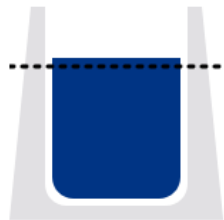
2022 and 2023 Measurements

- All Time High
- Much Above Normal
- Above Normal
- Normal
- Below Normal
- Much Below Normal
- All Time Low
- County
- Groundwater Basin



Major reservoir levels

Reservoirs get us through the dry months



105%

of average levels

Monitoring Wells Below Normal Level

60%

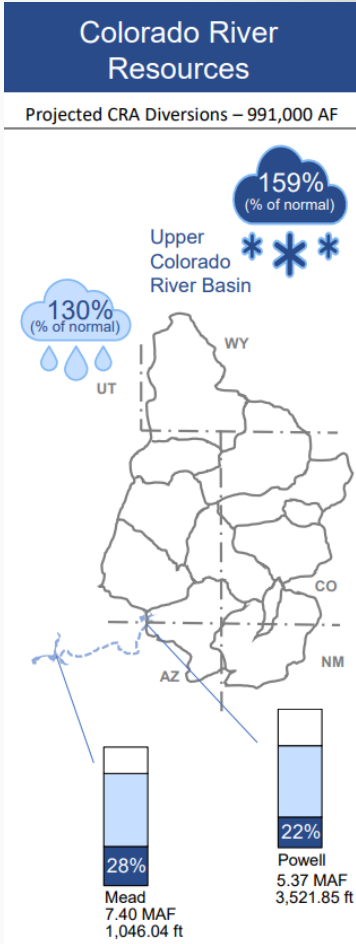
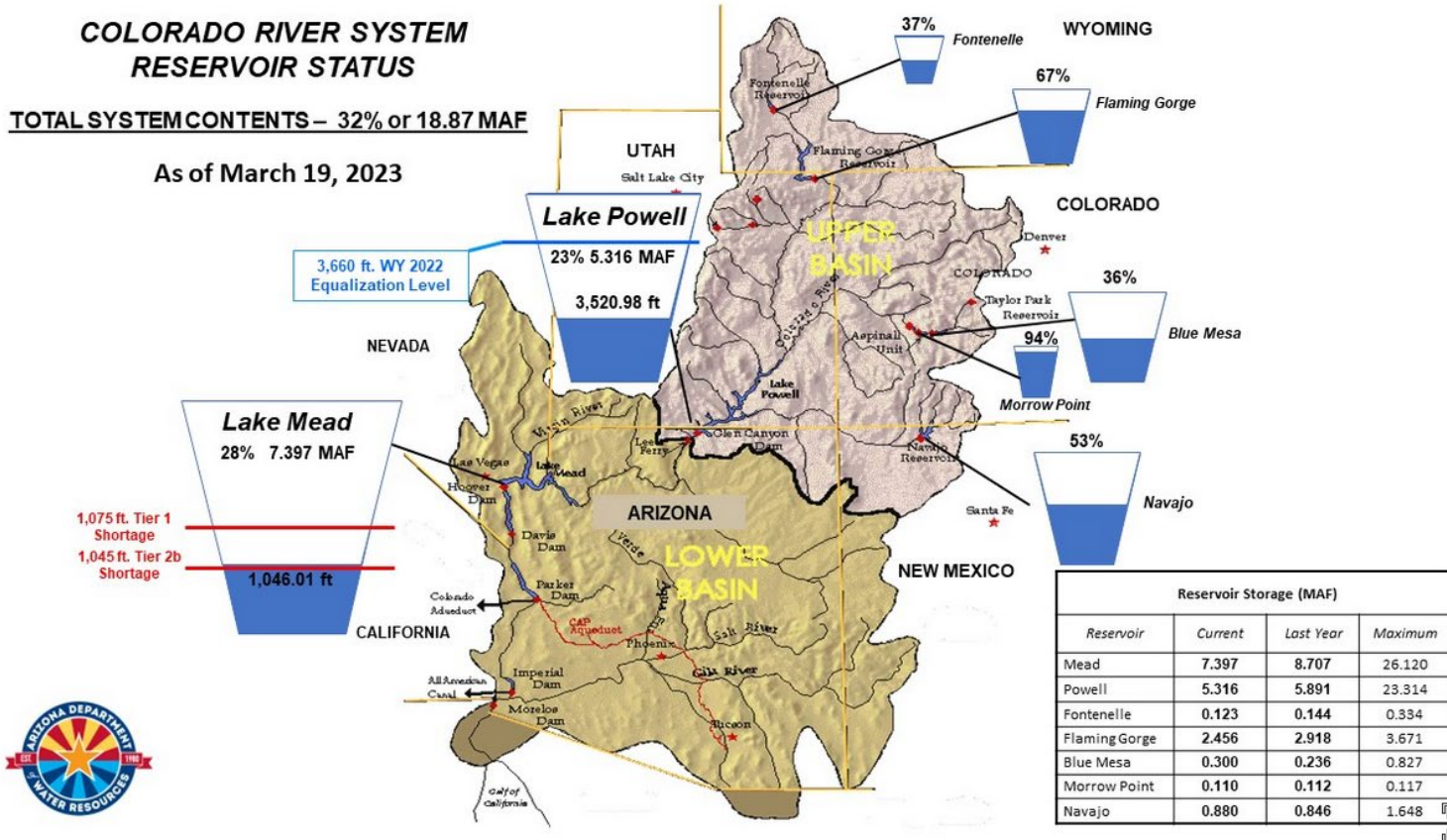
Source: <https://cww.water.ca.gov>
<https://sgma.water.ca.gov/CalGWLIVE/>

COLORADO RIVER WATER WATCH

COLORADO RIVER SYSTEM RESERVOIR STATUS

TOTAL SYSTEM CONTENTS – 32% or 18.87 MAF

As of March 19, 2023

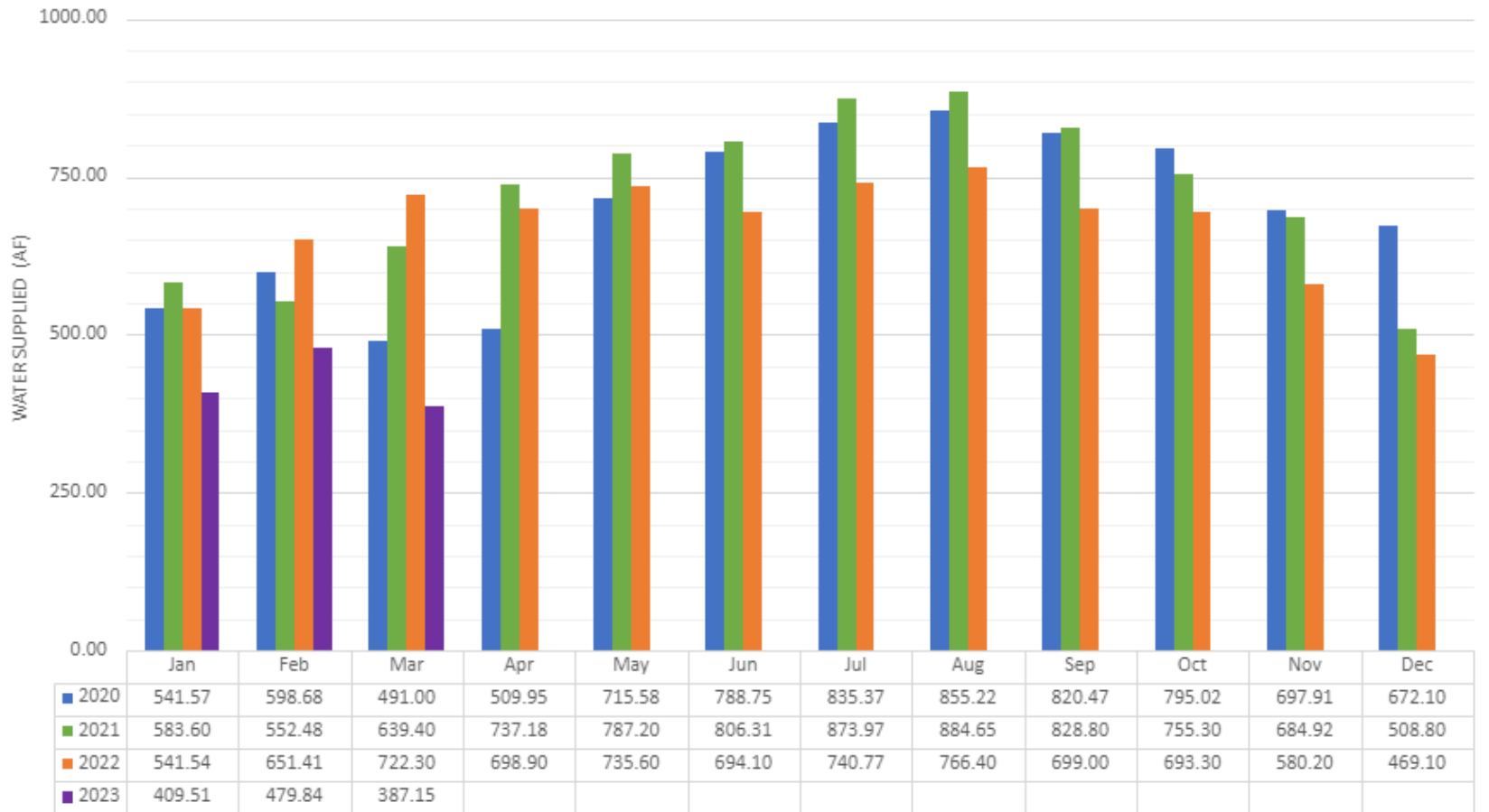


Source: <https://new.azwater.gov/crm/dashboard>

https://www.bewaterwise.com/water_supply_conditions/water_supply_conditions.pdf



District 29 Water Use

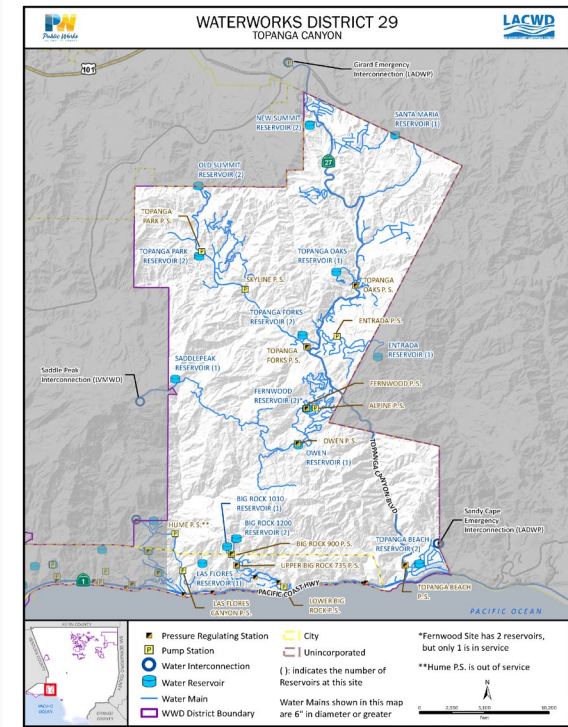


WATER CONSERVATION AS A WAY OF LIFE

- Watering restrictions have been relaxed
- Conservation as a way of life
- Visit our website for conservation tips, rebates, and more

DISTRICT 29 (TOPANGA) INFRASTRUCTURE

- 77 miles of water main
- 570 hydrants
- 1,535 valves
- 10 pump stations
- 6 pressure regulating stations
- 20 reservoirs (water tanks)



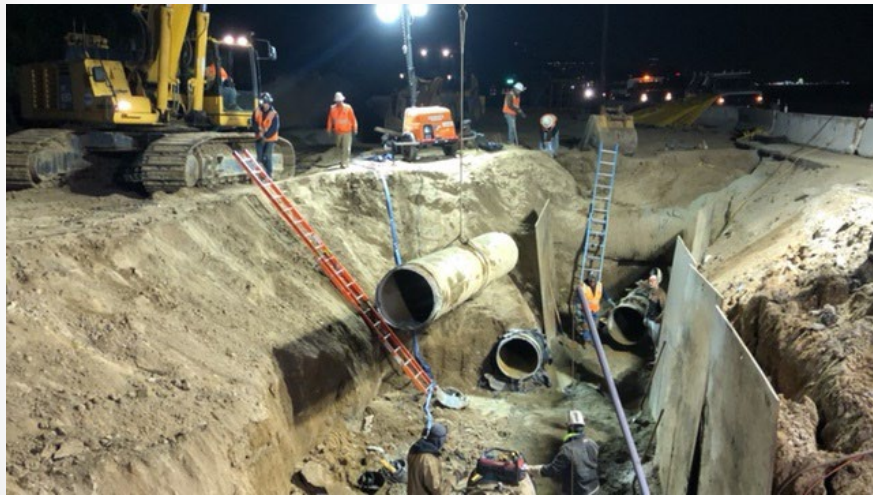
MAINTENANCE REQUIREMENTS

- Preventative maintenance extends the service life of the infrastructure



WATERWORKS STRATEGY FOR SUSTAINABLE OPERATIONS

- System Modernizations
- Asset Management Program
- Re-evaluating Maintenance Procedures



Malibu Branch Feeder Realignment



Owen Tank Site

DISTRICT 29 (TOPANGA) FUNDING STRATEGIES

- Efficiency measures
- Grants
- Debt Financing



CUSTOMER RESOURCES

- Low Income Household Water Assistance Program
- Sign up for text & email notifications
- Water waste reporting
- Water conservation

<http://lacwaterworks.org>



The Low Income Household Water Assistance Program

Learn more: <https://www.csd.ca.gov/waterbill>

LACWD LOS ANGELES COUNTY WATERWORKS DISTRICTS

Home | About | Conservation | Your Water | Services | Resources | Projects | Pay Bill | Turn On/Off Service

Low Income Household Water Assistance Program (LIHWAP)
APPLY HERE!

Waterworks on Social Media
TWITTER | FACEBOOK | INSTAGRAM
nextdoor NEXTDOOR

Report Water Waste!
Submit an Online Report
Download "The Works"
For Emergencies:
Call 1-800-675-HELP

Stay Informed
Sign up to receive Los Angeles County Waterworks Districts' urgent notifications via TEXT or EMAIL
Update Contact Information

Click & Chat

SUMMARY

- Drought
- Capital Improvement Projects
- Thank you for your continued partnership – we are your water district



THANK YOU

Visit our website at <http://lacwaterworks.org>

For Customer Service or Billing questions (24/7):

- (877) 637-3661

For Water Conservation or Drought related questions:

- (626) 300-3313
- <http://pw.lacounty.gov/go/waterconservation>

